



Laserfiche[®]

For Schools & Districts

**Drive District-Wide
Efficiency**

A photograph of a school building with the word "SCHOOL" visible on the facade. The building features a prominent archway and columns. The image is partially obscured by a white and orange geometric shape on the left side of the page.

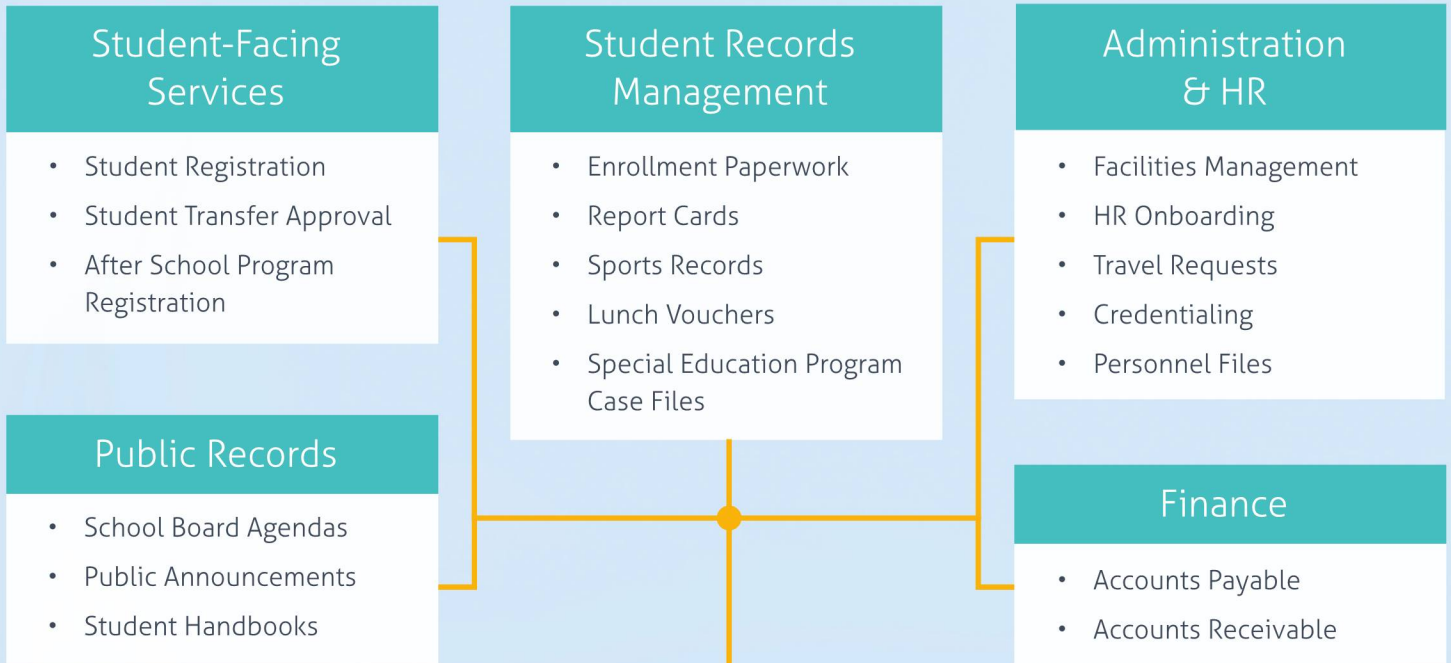
SCHOOL

“ The possibilities are endless. Applied wisely, the Laserfiche platform can do everything from serve teachers to improve student performance. ”

Robert Allen

Director of Business Applications and Processes
Frisco Independent School District

Optimize Operational Efficiencies District-Wide



Use Laserfiche to Capture Documents From

- Email
- Fax
- Electronic Documents
- Scanners
- Digital Audio & Video
- Multifunction Peripherals
- Electronic Forms

Speed Approval and Review

Laserfiche accelerates staff approvals by routing documents to the right people at the right time. At any point during the review process, it's easy to see who is responsible for the next action and send automatic email reminders to keep the process moving.



Key Components of Laserfiche

With easy-to-use solutions such as electronic forms, workflow automation, one-click integration tools and records management, Laserfiche is an intuitive software suite that simplifies information management across the organization.

BUSINESS PROCESS MANAGEMENT

Automate document naming, filing and routing as well as email notifications to save time and money

MULTI-CHANNEL CAPTURE

Capture information from paper documents, electronic forms, emails, faxes and third-party databases

ELECTRONIC FORMS

Replace paper forms with easy-to-design e-Forms

LASERFICHE ECM

GOVERNANCE, RISK & COMPLIANCE

Protect and preserve information with DoD 5015.2 and VERS-certified records management, digital signatures and role based authorization

DOCUMENT DISTRIBUTION

Expedite student and faculty services using on-demand, read-only documents stored online

DOCUMENT MANAGEMENT

Search and retrieve documents to locate information with preconfigured, full text and advanced searches

Benefits of Laserfiche ECM

Laserfiche empowers school districts to support the success of staff and students alike. Whether you are an administrator, records manager or IT professional, Laserfiche offers easy-to-use tools designed to simplify your job.

Transform Manual Work Processes

Laserfiche helps school districts do more with less by improving staff collaboration and routing information across the district for review and approval.

- **Business Process Templates:** Meet your district's operational needs with easily configurable, templated solutions for student registration, student records management, accounts payable and more.
- **Electronic Forms:** Replace paper forms with easy-to-design electronic forms—no programming required.
- **Workflow Automation:** Simplify the review and approval of action items, such as application processing, employee expense reports and more.

“

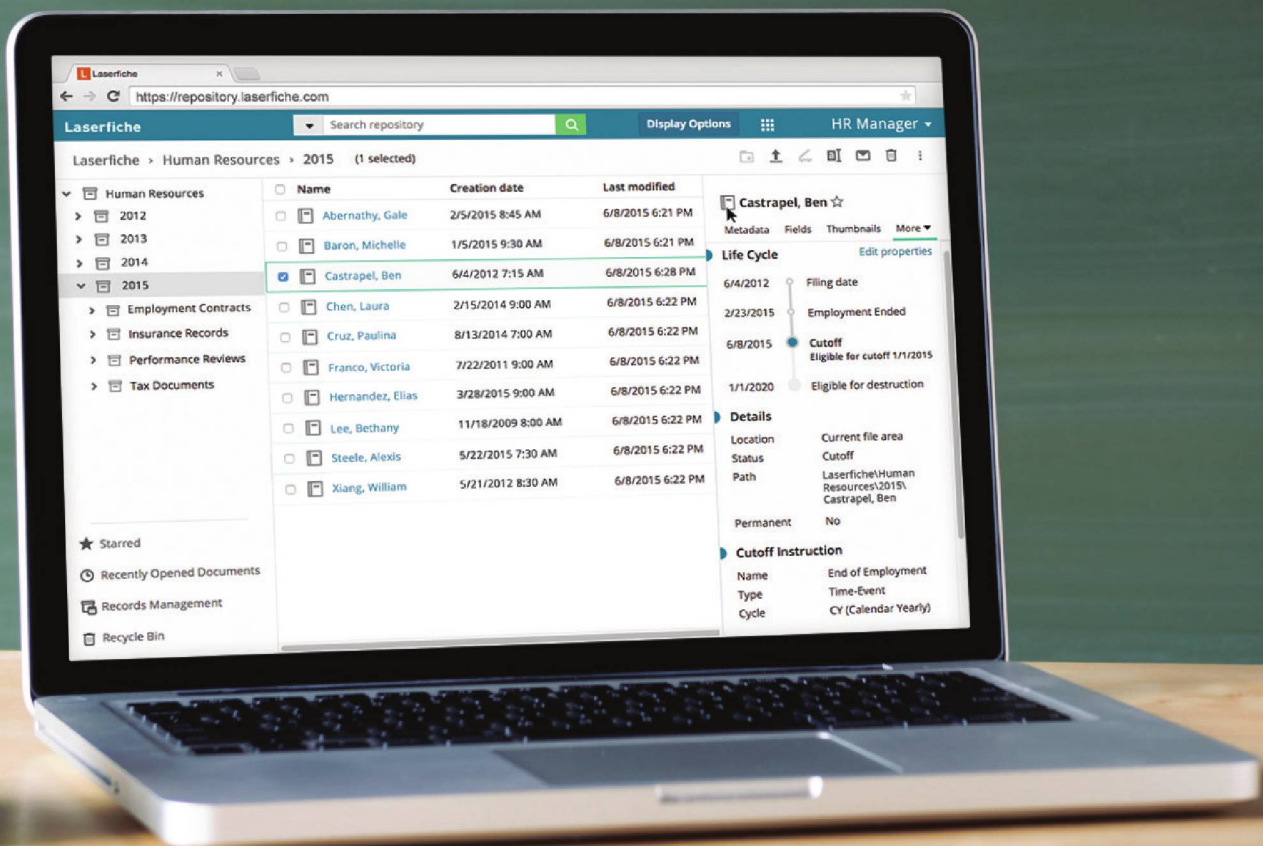
”



Integrate Applications with Ease

Laserfiche seamlessly integrates with the applications schools districts use every day—including student information systems (SIS), enterprise resource planning (ERP) systems, human resources software and more. This allows you to easily create intuitive, cost-effective solutions using existing technology investments.

- Integrate with line-of-business applications in minutes using **Laserfiche Connector**—an easy-to-use, wizard-driven tool that does not require custom programming.
- Create custom applications and integrations with the **Laserfiche Software Developer's Kit (SDK)**, a highly flexible and open programming interface.
- Browse hundreds of **ready-to-use integrations** that help you easily connect Laserfiche with core business applications, including Microsoft Office programs, multifunction devices such as Ricoh and Samsung, and popular cloud-based services including Microsoft OneDrive® and Google Drive™.



Protect the Security and Integrity of Student Records

Laserfiche simplifies compliance by easily storing records in accordance with regulatory rules, such as FERPA, HIPAA and ESSA.

- Laserfiche's government-certified security features help safeguard sensitive documents across the district—including controlling who sees what information based on a person's job role, department or other security authorization.
- With powerful auditing capabilities, Laserfiche tracks every user interaction with a document—helping you prepare for audits in minutes.
- Laserfiche Records Management—a DoD 5015.2-certified solution—can help you maintain secure, accurate and readily accessible records across the district.



© 2016 Laserfiche

Laserfiche is a division of Compulink Management Center, Inc. Laserfiche®, Run Smarter® and Compulink® are registered trademarks of Compulink Management Center, Inc. All other trademarks are properties of their respective companies. Due to continuing product development, product specifications and capabilities are subject to change without notice. Printed in the USA.

Item #7610

Your Next Step

Read White Papers and Case Studies

laserfiche.com/education

Get a Demo

laserfiche.com/demo

Contact Us

(800) 985-8533